

# Lee Meriwether

## PHOTOGRAPH ORDER FORM

To order an autographed photo, please select the photo(s) you wish to receive. Enclose a donation of **\$40 for each photo** requested along with a self-addressed stamp envelope. Please make checks payable to "AbilityFirst" with "Camper Fund" in the memo line.

Send this form, your check and self-addressed stamped envelope to:

AbilityFirst, c/o Lesley Aletter, P.O. Box 6061-289, Sherman Oaks, CA 91413



0001-1-22AMC

0005-1-42Barnaby

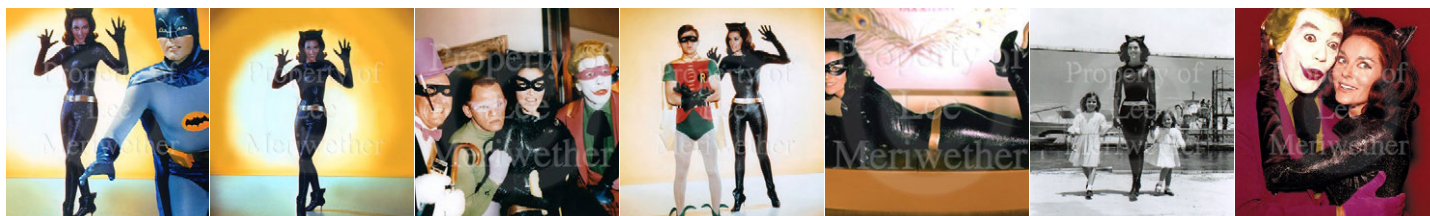
0007-3-44Barnaby

0008-4-45Barnaby

0009-1-24Batman

0010-1-36BatmanTV

0011-10-33Batman



0014-2-25Batman

0015-3-26Batman

0017-5-28Batman

0018-6-29Batman

0019-7-30Batman

0020-8-31Batman

0022-13-62Batman



0028-1-7MissAmerica

0029-2-8MissAmerica

0031-1-18MissionImp

0032-2-19MissionImp

0036-3-16Munsters

0037-3-17Munsters

0039-1-46StarTrek



0040-2-47StarTrek

0041-3-48StarTrek

0042-1-37TimeTunnel

0043-2-38TimeTunnel

0044-3-39TimeTunnel

0045-4-40TimeTunnel

0046-5-41TimeTunnel

Name: \_\_\_\_\_

Address: \_\_\_\_\_

City: \_\_\_\_\_ State: \_\_\_\_\_ Zip: \_\_\_\_\_

E-mail: \_\_\_\_\_ Phone: (\_\_\_\_) \_\_\_\_\_

- I have enclosed a check made payable to AbilityFirst in the amount of \$40 for each photo requested.
- I have enclosed a self-addressed stamped envelope.

**NOTE:** If you are sending a personal item requesting that it be autographed by Ms. Meriwether, you must enclose \$60 as a donation to AbilityFirst in addition to a self-addressed stamped envelope. Personal items sent to be autographed will not be returned without a donation.

**Photos are \$40 each as a donation to AbilityFirst.**

Please make checks payable to "AbilityFirst" with "Camper Fund" in the memo line.

To learn more about AbilityFirst, please visit [www.abilityfirst.org](http://www.abilityfirst.org).

Mail this form, payment, and self-addressed stamped envelope to:

AbilityFirst  
c/o Lesley Aletter  
P.O. Box 6061-289  
Sherman Oaks, CA 91413

**NOTE:** Please allow 6 to 9 months for delivery.